

Have you ever printed a portrait of a loved one? A **portrait** is an image of a person, sometimes showing mostly the head and shoulders, and other times showing the entire body. A portrait can be a painting, drawing, photograph, print, or even sculpture. We will explore an artwork together and learn how to make a portrait in the form of a print.



Toyin Ojih Odutola. *Birmingham*, 2014. Four-color lithograph with gold leaf. 24 x 16 1/2 in. each. Frye Art Museum, Purchased with funds provided by Seattle Art Fair, 2018.007.01-03. Photo: Nathaniel Willson.

GET INSPIRED

Artist Toyin Ojih Odutola created this work, *Birmingham*, based on photographs that she took of her brother in Birmingham, Alabama. She moved around him and captured different angles, almost like showing different parts of him as a person.

For a deeper discussion, you can follow along with a video of the activity on [fryemuseum.blog](https://www.fryemuseum.org/blog) and click on the MAKE category.

Take a moment to look closely at this artwork.

- This is one artwork. How many images do you see here?
- Take a close look at each image. What is going on in this work? What do you notice?
- How are these three images different from one another? What do they have in common?
- Find the image where you can see the face clearly. Does he look happy, sad, confused, worried, or something else?
- Which image do you think the artist was looking down from above in order to illustrate her brother? What do you see that makes you see that?

MAKE SOME ART

Using Toyin Ojih Odutola's work as an inspiration, let's also create a print of someone you love. Will it be one of your siblings or someone else in your family? Let's focus on the face, neck, and shoulders. It might be helpful to have the person whose portrait you are creating to sit in front of you or you can also reference a photograph.

We will be making a collage first before making some prints. A **collage** is an image created with many cut-outs.

You will need...

- A flat-headed bristle brush
- Tempera paint
- A container for the paint
- A larger and thicker material to serve as a base
- Paper for printing onto, such as construction paper, newspaper, or paper bags
- Cardstock, a manila folder, or a cereal box
- Scissors
- Glue or glue stick

Let's get started

1. Cut out all the shapes you need from either cardstock, manila folder, or a cereal box to make the collage. For children who are just learning to cut, draw out the shapes first before cutting. Use the following questions to guide your child through the process:
 - What is the biggest shape needed for the portrait? What shapes might you need?
 - Which facial feature might you need to make next? What shape(s) might you need? Where might you place it on the face? Repeat these questions until all the facial features are completed.
 - How might you create the hair? Would the hair be made out of several large shapes or individual strands of hair?
 - What are some other details you might include? Does the person in your portrait wear glasses or other accessories?
2. After you cut out all the shapes you need, arrange them on a larger flat surface and glue them down. Make sure you apply glue all the way to the edges of each shape and then place them back onto the surface.
3. Once the glue is dry, make sure all the shapes are nice and flat, meaning they're not moving around and that the edges are securely glued down. Apply paint to the entire surface of the collage as evenly as possible.
4. Take a piece of paper and place it over your painted collage. Without moving the paper, pat it down firmly all over the back of the paper with your hand. Make sure you get to all the edges and corners. Once it's ready, gently lift the paper and check out your print! If there is still paint on the collage, try pulling another print from it without reapplying the paint.
5. Feel free to repeat these steps and make another print of the same collage!



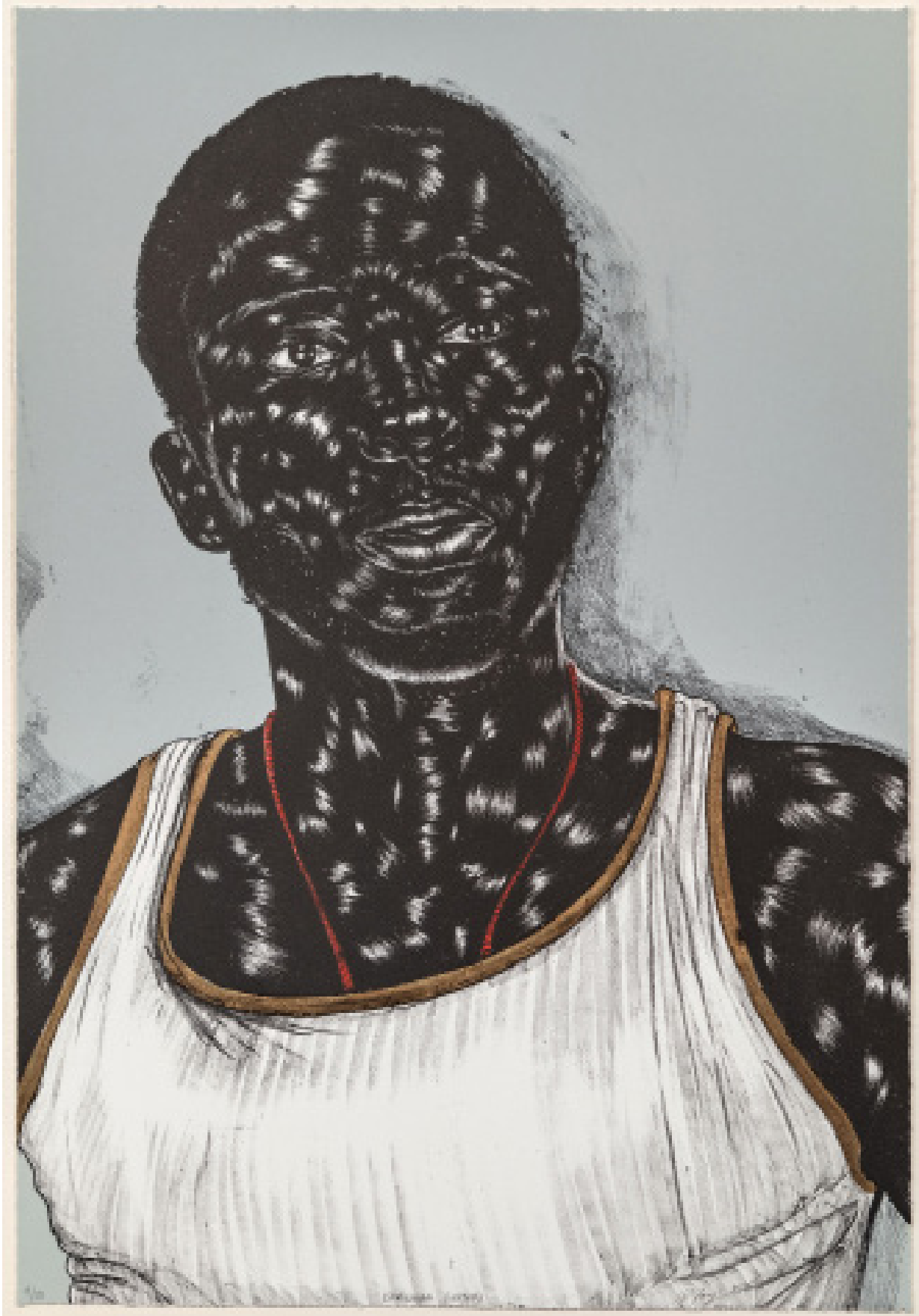
SHARE YOUR WORK

How many prints did you make? Since you are able to make multiple prints of the same image, share them with people you love! Don't forget to also share it with us on social media with us using #FryefromHome.

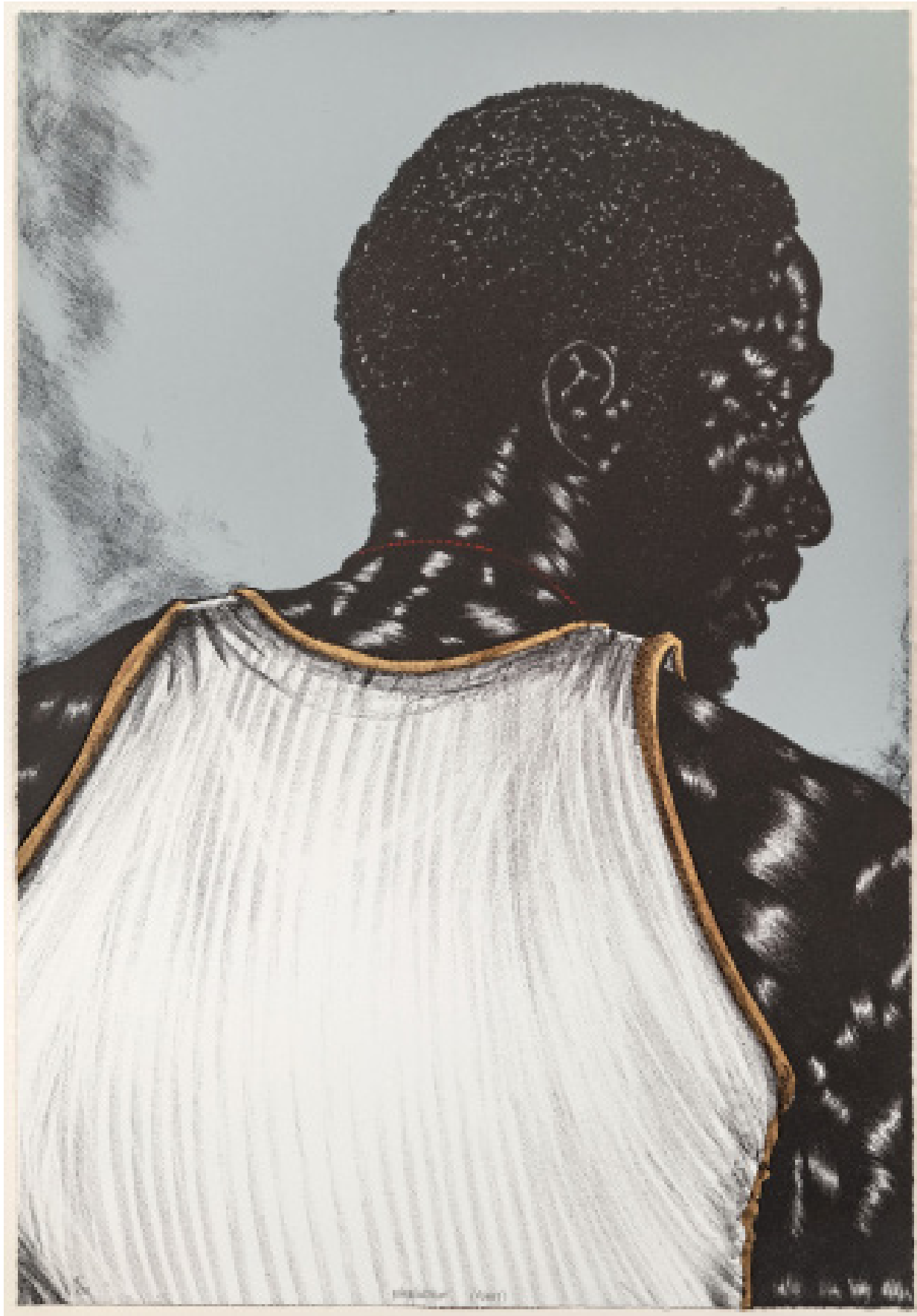
Visit fryefromhome.blog for more Frye Families activities and inspiration.



Toyin Ojih Odutola. *Birmingham* (left), 2014. Four-color lithograph with gold leaf. 24 x 16 1/2 in. Frye Art Museum, Purchased with funds provided by Seattle Art Fair, 2018.007.01-03. Photo: Nathaniel Willson.



Toyin Ojih Odutola. *Birmingham (center)*, 2014. Four-color lithograph with gold leaf. 24 x 16 1/2 in. Frye Art Museum, Purchased with funds provided by Seattle Art Fair, 2018.007.01-03. Photo: Nathaniel Willson.



Toyin Ojih Odutola. *Birmingham (right)*, 2014. Four-color lithograph with gold leaf. 24 x 16 1/2 in. Frye Art Museum, Purchased with funds provided by Seattle Art Fair, 2018.007.01-03. Photo: Nathaniel Willson.