





CONTENTS

LETTER FROM THE PRESIDENT AND DIRECTOR	3
STEWARDSHIP	
Collections	4
Acquisitions and Gifts of Art to the Museum	5
Artworks on Loan	6
EXHIBITIONS	
Exhibitions	8
Lenders	10
Publications	11
Selected Reviews	12
ARTS ENGAGEMENT PROGRAMS	
Students	13
Adults	14
Educators	15
Community Programs and Events	16
Community Partners	17
SUPPORT	
Foundations, Funding Agencies, Corporations, Media Sponsors, In-Kind Contributors, and Individual Donors	18
Sustained Support	19
Membership	20
Volunteers	26
STAFF	28

Cover:
Isaac Layman. *Untitled* (detail), 2011.
Photographic construction, ink-jet on paper.
59 x 78 in. Frye Art Museum, Purchase, Randolph
Philip Koelsch Bequest, 2011.009.

Opposite:
Charles Sprague Pearce. *Sainte Genevieve* (detail),
1887. Oil on canvas. 82 x 66 in. Courtesy of an
anonymous lender. Photo: TJ Johnson



MISSION STATEMENT

The Frye Art Museum is a living legacy of visionary patronage and civic responsibility, committed to artistic inquiry and a rich visitor experience. A catalyst for our engagement with contemporary art and artists is the Founding Collection of Charles and Emma Frye, access to which shall always be free.

Small Frye: Storytelling in the Galleries.
Frye Art Museum. Photo: Greg Plumis

LETTER FROM THE PRESIDENT AND DIRECTOR



Photo: TJ Johnson

On February 8, 2012, the Frye Art Museum celebrated its 60th anniversary. Trustees and staff gathered to acknowledge the momentous occasion and to pay tribute to Charles and Emma Frye. With a renewed sense of purpose and excitement, the Frye began another year dedicated to serving the community with free access to its collections, exhibitions, and arts engagement programs.

Fiscal year 2012 was a year of celebration and of accomplishment made possible by the visionary civic patronage of Charles and Emma Frye and by the generosity of Museum trustees, members and many

other individual donors, foundations, government agencies, and corporations, who are acknowledged in the pages of this report. *The Seattle Times* reported the Frye's 60th anniversary on the front page of the paper, highlighting *Beloved: Pictures at an Exhibition*, one of three exhibitions which launched our anniversary year.

We are grateful for the support we received and are pleased to report that through challenging economic times, the Frye Art Museum's finances remain strong and secure. Our resources are being carefully and thoughtfully stewarded: this year 100 percent of the support we received from the community was dedicated to our exhibitions and education and community-outreach programs. The past year, we also refurbished the Frye's gallery spaces, store, and café.

All of the exhibitions presented at the Frye this past fiscal year were researched, conceived, curated, and produced in-house. We are proud to have supported and presented the work of contemporary artists, including Isaac Layman and Susie J. Lee, two exceptional Seattle-based artists seen in their first solo museum exhibitions; Li Chen, an internationally renowned sculptor working in Shanghai and Taiwan; and Liu Ding, one of China's leading conceptual artists, who received his first U.S. solo exhibition at the Frye.

This year the Frye Founding Collection was shown to critical acclaim and the delight of visitors in three major exhibitions: *Beloved: Pictures at an Exhibition*; *Ties That Bind: American Artists in Europe*; and *"The Perfection of Good-Nature": Frye Founding Collection*.

Beloved extended the Frye's commitment to innovation and exploration of the changing role the museum. Frieda Sondland, a ninety-one-year-old resident of the First Hill neighborhood who has visited the Frye nearly every day for more than a decade, chose the works in the exhibition as a "citizen curator," as part of our continuing investigation into redefining the relationship between the Museum and our diverse audiences.

"The Perfection of Good-Nature" brought important new scholarship and understanding of the Founding Collection by tracing, for the first time, the history of Charles and Emma Frye's art collection. Research also documented Charles Frye's visionary plan in 1915 for an art museum in Seattle's Volunteer Park that would have brought together the finest collections in Seattle at the time under one roof.

Our commitment to serving the needs of our community extends beyond the Museum's walls. With our educational programs and outreach, we value approaches that have a multiplier effect on the quality of life in Seattle. We are proud of our here:now program for individuals living with dementia and their care partners, Small Frye: Storytelling in the Galleries for preschool-age children, and Path with Art for those transitioning from homelessness. These and many other arts engagement programs are free for everyone. Our goals are to create a strong, positive sense of place, to unite disparate parts of the community in constructive ways, and to meet some of the most pressing needs of our community.

Through the dedication of our trustees, staff, members, and volunteers, the Frye Art Museum continues to enhance the community's cultural health and well-being through the shared experience of art. We invite you to take part in our activities and to visit the Frye often in the year ahead.

David Buck, President, Board of Trustees
Jo-Anne Birnie Danzker, Director

BOARD OF TRUSTEES
David D. Buck, President
Jan Hendrickson, Vice President
Frank P. Stagen, Vice President
Kate Janeway, Secretary
Douglas D. Adkins, Treasurer

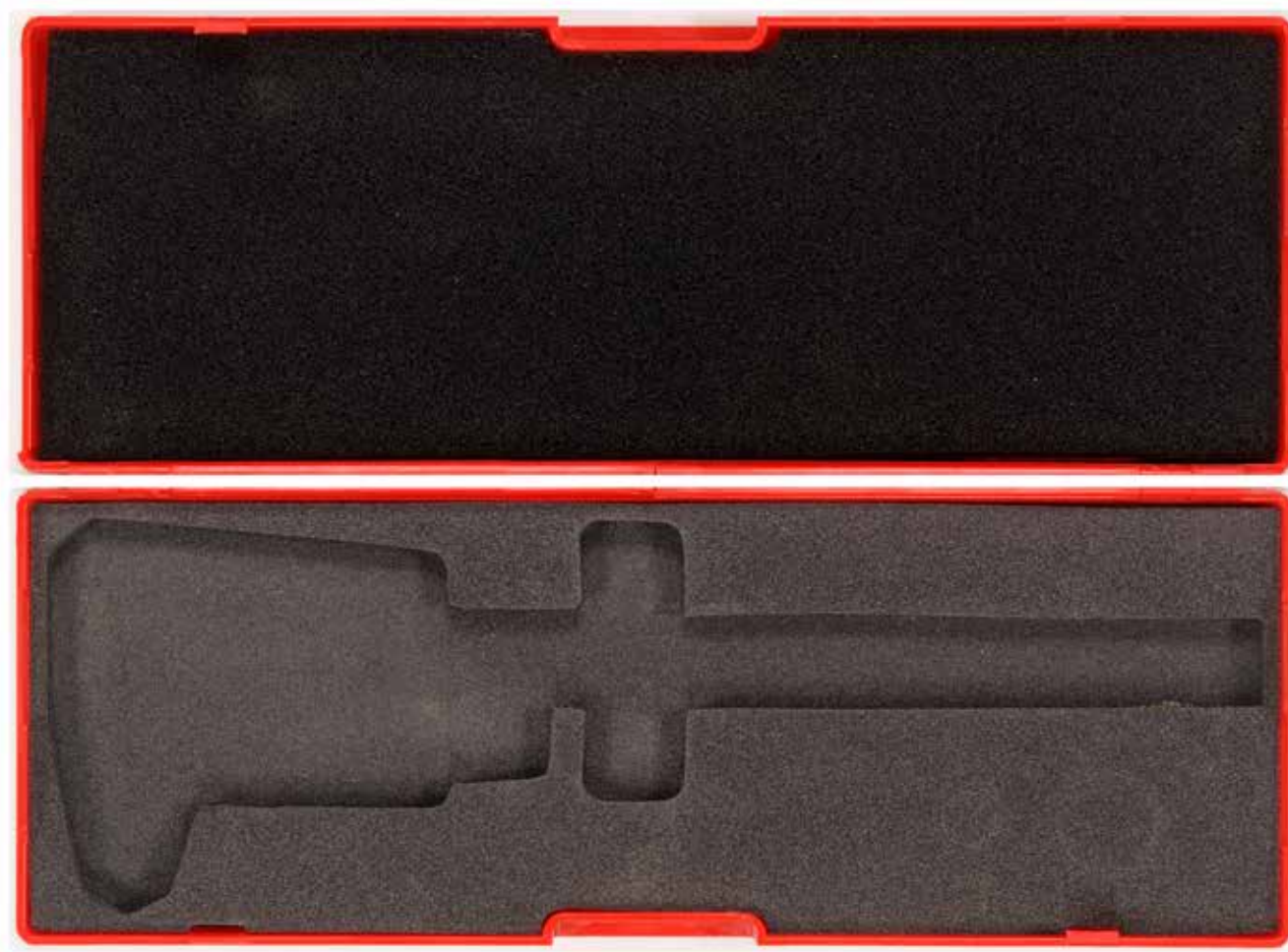
DIRECTOR
Jo-Anne Birnie Danzker

STEWARDSHIP Collections

Frye Collection
Artworks
1,300

Founding Collection
Artworks
232

Artists in the
Collections
498



Above:
Isaac Layman. *Untitled*, 2011. Photographic construction, ink-jet on paper. Each 45 x 120 in. Frye Art Museum, Gift of Isaac and Camilla Layman, 2011.010A,B.

Opposite, clockwise from left:
Susie J. Lee. *Still Lives: Exposure*, 2010. High definition video in a framed, matted LED monitor. Frye Art Museum, Purchase, Frye Foundation and Offield Family Foundation, 2012.001.

Otto Dix. *Bettlerin (Beggar)*, 1924. Lithograph on paper. 19 1/2 x 12 13/16 in. Frye Art Museum, Gift of Dr. Thomas D. Lonner and Henry J. Dietrich, 2012.002.

Isaac Layman. *Untitled*, 2011. Photographic construction, ink-jet on paper. 59 x 78 in. Frye Art Museum, Purchase, Randolph Philip Koelsch Bequest, 2011.009.

STEWARDSHIP Acquisitions and Gifts of Art to the Museum

Acquisitions and Gifts

4

Otto Dix

German, 1891-1969
Bettlerin (Beggar), 1924
Lithograph on paper
19 1/2 x 12 13/16 in.
Frye Art Museum, Gift of Dr.
Thomas D. Lonner and Henry J.
Dietrich, 2012.002

Isaac Layman

American, b. 1977
Untitled, 2011
Photographic construction, ink-jet
on paper
59 x 78 in.
Frye Art Museum, Purchase,
Randolph Philip Koelsch Bequest,
2011.009

Untitled, 2011
Photographic construction, ink-jet
on paper
Each 45 x 120 in.
Frye Art Museum, Gift of Isaac and
Camilla Layman, 2011.010A,B

Susie J. Lee

American, b. 1972
Still Lives: Exposure, 2010
High definition video in a framed,
matted LED monitor
Frye Art Museum, Purchase, Frye
Foundation and Offield Family
Foundation, 2012.001



Loans to Other
Museums
5

Exhibition

*The World of Nicolai Fechin-
From Kazan to Taos*

The State Museum of Fine Arts
of the Republic of Tatarstan, Kazan
November 2, 2011-January 15, 2012

The State Russian Museum,
Saint Petersburg
February 29-May 9, 2012

The State Tretyakov Gallery,
Moscow
May 23-July 29, 2012

Exhibition

*Discovering 20th Century
Russian Masters: Nicolai Fechin*

The Museum of Russian Art,
Minneapolis, MN
August 25, 2012-January 20, 2013



Artworks

Nicolai Fechin
b. Kazan 1887, d. California 1955

*Lady in Pink (Portrait of Natalia
Podbelskaya), 1912*
Oil on canvas
45 1/2 x 35 in.
Frye Art Museum, 1990.005



Portrait of a Young Woman, 1912
Oil on canvas
31 3/4 x 28 in.
Frye Art Museum, 1990.006

Still Life with Oranges, 1925
Oil on canvas
30 1/4 x 36 1/4 in.
Frye Art Museum, 1984.003

*Portrait of a Writer (Nicolai N.
Evreinov), 1926*
Oil on canvas
30 x 25 in.
Frye Art Museum, 1991.006

Albidia, 1928
Oil on canvas
30 1/4 x 25 1/4 in.
Frye Art Museum, 1976.003

Opposite, left to right:
Nicolai Fechin. *Portrait of a Young Woman*,
1912. Oil on canvas. 31 3/4 x 28 in. Frye Art
Museum, 1990.006.

Nicolai Fechin. *Still Life with Oranges*, 1925.
Oil on canvas. 30 1/4 x 36 1/4 in. Frye Art
Museum, 1984.003.

Right:
Nicolai Fechin. *Lady in Pink (Portrait of Natalia
Podbelskaya)*, 1912. Oil on canvas. 45 1/2 x 35
in. Frye Art Museum, 1990.005.



EXHIBITIONS Exhibitions

Annual Attendance
61,014

The Museum was closed for
refurbishment April 16–July
14, 2012.



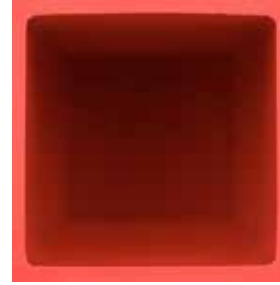
Tête-à-tête
February 6, 2010–January 8, 2012

Tête-à-tête is organized by the Frye Art Museum and initiated by Jo-Anne Birnie Danzker. The exhibition is funded by the Frye Foundation with the generous support of Frye Art Museum members and donors.



The Frye Art Museum Founding Collection
November 19, 2011–January 8, 2012

The Frye Art Museum Founding Collection is organized by the Frye Art Museum. The exhibition is funded by the Frye Foundation with the generous support of Frye Art Museum members and donors.



Isaac Layman—Paradise
November 19, 2011–January 22, 2012

Isaac Layman—Paradise is organized by the Frye Art Museum and curated by Jo-Anne Birnie Danzker. The exhibition is funded by the Frye Foundation with generous support from the Offield Family Foundation, 4Culture, and Frye Art Museum members and donors.

Sponsorship for the exhibition is provided by Nitze-Stagen. Media sponsor is *Seattle Met* magazine. Seasonal support is provided by ArtsFund.

4Culture awarded Isaac Layman an Individual Artist Project award for this exhibition. Isaac Layman is also supported by the Artist Trust Grants for Artist Projects (GAP) Program.



Beloved: Pictures at an Exhibition
February 4–April 15, 2012

Beloved: Pictures at an Exhibition is organized by the Frye Art Museum and curated by Frieda Sondland and Jo-Anne Birnie Danzker. The exhibition is funded by the Frye Foundation with the generous support of Frye Art Museum members and donors. Seasonal support is provided by ArtsFund and Seattle Office of Arts & Cultural Affairs.

Visits to Museum
Website
189,930

Facebook Friends
7,030

Twitter Followers
9,006

Installation view. *Tête-à-tête*, 2011. Frye Art Museum. Photo: Jill Hardy

Art gallery in the residence of Charles and Emma Frye. Photo: n.d. Frye Art Museum

Isaac Layman. *Untitled*, 2011. Photographic construction, ink-jet on paper. 59 x 58 in. Collection of the artist.

Franz Xaver Winterhalter. *Susanna and the Elders* (detail), 1866. Oil on canvas. 64 5/8 x 46 5/8 in. Frye Art Museum, Charles and Emma Frye Collection, 1952.199. Photo: Spike Mafford

EXHIBITIONS Exhibitions



Li Chen: Eternity and Commoner
February 18–April 15, 2012

Li Chen: Eternity and Commoner is organized by the Frye Art Museum and curated by Jo-Anne Birnie Danzker. The exhibition is funded by the Frye Foundation with the generous support of Frye Art Museum members and donors. Media sponsor is KUOW. Seasonal support is provided by ArtsFund and Seattle Office of Arts & Cultural Affairs.

Travel by the artist and his assistants to Seattle is supported by the Asia Art Center, Beijing and Taipei.

Li Chen. *Visual Perception* (detail), 2008. Wood and rope. 48 x 18 7/8 x 19 11/16 in. Collection of the artist. Photo: Wu Yushan

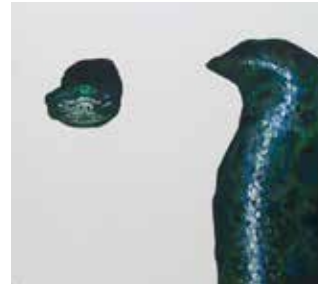


Susie J. Lee: Of Breath and Rain
February 18–April 15, 2012

Susie J. Lee: Of Breath and Rain is organized by the Frye Art Museum and curated by Robin Held. The exhibition is funded by the Frye Foundation with generous support from the Offield Family Foundation and Frye Art Museum members and donors. Media sponsor is *The Stranger*. Seasonal support is provided by ArtsFund and Seattle Office of Arts & Cultural Affairs. Exhibition seating is provided by Greenroom Decor, Seattle.

For their support in the development of *Still Lives*, the artist would like to thank 4Culture SITE-SPECIFIC; Lawrimore Project, Seattle; SEEDArts, Seattle; and Washington Care Center, Seattle.

Susie J. Lee. *Rain Shower*, 2007/2012. LED/sound installation. Courtesy of the artist and Lawrimore Project. Rendering of installation in Frye Art Museum galleries: T.J. Johnson



Liu Ding's Store: Take Home and Make Real the Priceless in Your Heart
July 14–September 9, 2012

Liu Ding's Store: Take Home and Make Real the Priceless in Your Heart is organized by the Frye Art Museum and curated by Jo-Anne Birnie Danzker. The exhibition is funded by the Frye Foundation with the generous support of Frye Art Museum members and donors. The exhibition is supported by a grant from the Seattle Office of Arts & Cultural Affairs. Seasonal support of the Frye Art Museum is provided by 4Culture, Canonicus Fund, and ArtsFund.

Liu Ding. *Liu Ding's Store, Take Home and Make Real the Priceless in Your Heart* (detail), 2012. Oil on canvas. Dimensions variable. Collection of the artist. Photo: Spike Mafford



Ties That Bind: American Artists in Europe
July 14–September 23, 2012

Ties That Bind: American Artists in Europe is organized by the Frye Art Museum and curated by Jo-Anne Birnie Danzker. The exhibition is funded by the Frye Foundation with the generous support of Frye Art Museum members and donors. The exhibition is supported by a grant from the Seattle Office of Arts & Cultural Affairs. Seasonal support of the Frye Art Museum is provided by 4Culture, Canonicus Fund, and ArtsFund.

John Singer Sargent. *Mrs. Frederick William Roller* (detail), 1895. Oil on canvas. 88 1/4 x 44 5/8 in. Frye Art Museum, 1981.014.



"The Perfection of Good-Nature": Frye Founding Collection
July 14–September 23, 2012

"The Perfection of Good-Nature": Frye Founding Collection is organized by the Frye Art Museum and curated by Jo-Anne Birnie Danzker. The exhibition is funded by the Frye Foundation with the generous support of Frye Art Museum members and donors. The exhibition is supported by a grant from the Seattle Office of Arts & Cultural Affairs. Seasonal support of the Frye Art Museum is provided by 4Culture, Canonicus Fund, and ArtsFund.

Franz von Stuck. *Die Sünde* (Sin) (detail), ca. 1908. Syntonos on canvas. 34 7/8 x 21 5/8 in. Frye Art Museum, Charles and Emma Frye Collection, 1952.169.

EXHIBITIONS Exhibitions and Lenders



The Frye Art Gallery, ca. 1915-1940
July 14-September 23, 2012

The Frye Art Gallery, ca. 1915-1940 is organized by the Frye Art Museum. The exhibition is funded by the Frye Foundation with the generous support of Frye Art Museum members and donors. Seasonal support is provided by 4Culture, Seattle Office of Arts & Cultural Affairs, Canonicus Fund, and ArtsFund.

Art gallery in the residence of Charles and Emma Frye. Photo: n.d. Frye Art Museum



Helmi Juvonen: Dispatches to You (R.S.V.P.)
September 22, 2012-January 27, 2013

Helmi Juvonen: Dispatches to You (R.S.V.P.) is organized by the Frye Art Museum. The exhibition is funded by the Frye Foundation with the generous support of Frye Art Museum members and donors. Seasonal support is provided by 4Culture, Seattle Office of Arts & Cultural Affairs, Canonicus Fund, and ArtsFund.

Helmi Juvonen. *Mark Tobey's Eskimo Mask (detail)*, ca. 1954. Linoleum block on paper. 14 1/2 x 11 1/4 in. Frye Art Museum, Gift of Wesley Wehr, 1982.008.03.



Favorites: The Frye Founding Collection
September 25, 2012-January 13, 2013

Favorites: The Frye Founding Collection is organized by the Frye Art Museum. The exhibition is funded by the Frye Foundation with the generous support of Frye Art Museum members and donors. Seasonal support is provided by 4Culture, Seattle Office of Arts & Cultural Affairs, Canonicus Fund, and ArtsFund.

Nikolai Nikanorovich Dubovskoi. *Seascape with Figures (detail)*, 1899. Oil on canvas. 65 1/8 x 56 in. Frye Art Museum, Charles and Emma Frye Collection, 1952.039.

Lenders to the Exhibitions

Greg Kucera and Larry Yocom
Isaac Layman
Susie J. Lee
Li Chen
Kelly and Diana Lindsay
Liu Ding
Yoko Ott and Scott Lawrimore
Leroy and Joie Soper

EXHIBITIONS Publications



Isaac Layman—Paradise
Edited by Jo-Anne Birnie Danzker
Contributors: Jo-Anne Birnie Danzker, Isaac Layman, Doug Nufer
Seattle, WA: Frye Art Museum, 2011
11.75 x 10.75 x .5 in., 72 pp.
Distributed by University of Washington Press
ISBN: 978-0-295-99185-6

The catalogue is funded by the Frye Foundation with the support of William Carleton and Cathy and Michael Casteel and additional support from Danielle Baker and Peter Myers, John and Shari Behnke, the Elizabeth Leach Gallery, Vicki and Gary Glant, Adam Glant, Lisa and William Holderman, Cris and Bruce Jaffe, Mihail S. Lari and Scott E. Murray, Christopher and Alida Latham, Scott Lawrimore and Yoko Ott, Kelly and Diana Lindsay, Miller Meigs Collection, Janice Niemi and Dennis Braddock, Kathleen O'Grady, Yoshimi Ott, Gary Owen, Bill and Bobby Street, and the Understanding & Insight Group LLC.



Susie J. Lee: Of Breath and Rain
Edited by Susie J. Lee
Contributors: Jo-Anne Birnie Danzker, Rebecca Brown, Robin Held, Susie J. Lee, Kolya Rice
Seattle, WA: Frye Art Museum, 2012
6.5 x 8.25 x 1.4 in., 539 pp.
ISBN: 978-1-935662-99-0

The publication is funded by the Frye Foundation with the support of Lawrimore Project, Mike Calcagno, Sylvia Lee, Monique Richards, Kentaro Toyama, Denise Jackins, and Ben Franks.



Beloved: Pictures at an Exhibition
Edited by Jo-Anne Birnie Danzker
Contributors: Jo-Anne Birnie Danzker, Laura Landau
Seattle, WA: Frye Art Museum, 2012
10.5 x 11.5 x .7 in., 112 pp.
ISBN: 978-0-9624602-5-8

The catalogue is published by the Frye Art Museum with the support of the Gordon D. Sondland and the Katherine J. Durant Foundation.

Selected Reviews

Isaac Layman—Paradise

“Layman saw to completion what many artists speak of, but do not accomplish: the re-presentation of quotidian objects in a way that befuddles and then engages the viewer. . . . This exhibit, like others in the last few years, pushes the boundaries of the Frye’s audience and patrons, educating them through exposure to cutting-edge and difficult work, as well as the canonical pieces in the permanent collection.”

– Kascha Semonovitch,
Crosscut

“Even with repeated glances, some remain as impenetrable as they are inexplicably compelling. They present sights that you know are familiar. Yet without any context to help you situate what you’re seeing, Layman’s visions have the frustrating allure or magnetic pull of a tune you can’t place or a name that escapes you.”

– Michael Upchurch,
The Seattle Times

“(Paradise) includes two dozen new works—one strains not to use the word “photographs,” because while they look like photographs... they are rather photographic constructions . . . vehicles for a majestic object of fine art, a monument that has traveled the greatest possible distance from the dumbest, dimmest beginnings to absurd blowout. It’s a monument to the desire for a monument”

–Jen Graves, *The Stranger*

Beloved: Pictures at an Exhibition

“Frieda Sondland has so much love for the Frye’s founding collection of 19th- and 20th- century art that she has visited it every day for 10 years. Last year, Sondland was invited by the museum to help curate a small exhibit of paintings. . . . For (Director Jo-Anne) Birnie Danzker having a devoted visitor pick the paintings in a show raises provocative questions about whether there is a single “correct” interpretation of a work of art, and whether an art lover with an untrained eye can have as much to say about what a painting means as a well-trained expert.”

–Katherine Long,
The Seattle Times

Li Chen: Eternity and Commoner

“There’s almost an aspect of assault, of violence, to these guardians—as if the elements are physically attacking them, reducing them back to dirt, as it were. . . . There’s the suggestion . . . (of) destructive processes. Or, in a more Buddhist view: a transformative process, part of the life cycle.”

–Brian Miller,
Seattle Weekly

“Using unlikely materials and a seemingly infallible eye for striking composition, Li Chen, in *Eternity and Commoner*, taps into truths that couldn’t feel more eternal or essential.”

–Michael Upchurch,
The Seattle Times

Susie J. Lee: Of Breath and Rain

“While Lee’s installations, videos and art objects draw heavily on technology, human experience lies at the heart of her pieces, from our sense of time and memory to our need to reach out. . . . The sensory experience sweeps you into a dreamlike state, you lose all sense of time, and you enter the realm of memory.”

–Elisa Mader, *Arts America*

“(Lee’s) background (in molecular biophysics and science education) emphasizes the keen mind and senses with which she approaches the world. Her spare works focus on life, love, loss and memory using abstract methods that allow room for interpretation.”

–Rachel Shimp,
City Arts

“*Exposure* is one of 13 real-time video portraits of residents of the Washington Care Center in Rainier Valley, which Lee completed as the nursing home’s artist in residence. . . . Lee’s work captures the ephemerality of life itself. This is as real as it gets: no second takes, no slow motion. Life is passing in high definition.”

–Laura Dannen,
Seattle Met

Ties That Bind: American Artists in Europe & “The Perfection of Good Nature”- Frye Founding Collection

Seattle’s Frye Art Museum celebrates its 60th anniversary with a renovation that enhances the flow between galleries, and two exhibits that highlight the strengths and eccentricities of the museum’s permanent collections. . . . With museum director Jo-Anne Birnie Danzker’s championing of this offbeat collection, a bracing re-evaluation of where some of the vital action was in European and American painting in the late 19th and early 20th century.

–Michael Upchurch,
The Seattle Times

ARTS ENGAGEMENT PROGRAMS Students

The Frye Art Museum provides preschool children, students, teachers, parents, and lifelong learners with opportunities to engage with visual culture in innovative ways. Through learner-centered and discussion-based programs, children and students are encouraged to examine and enjoy works of art while developing creative and critical-thinking skills. The Museum supports visual arts education as well as language arts and social studies and state and national learning standards. Partnering with organizations throughout the region is an integral part of our commitment to the community and a source for providing new arts experiences for audiences of all ages.

The Museum was closed for refurbishment April 16–July 14, 2012.

<p>Student Programs 134</p> <p>Students 3,199</p>	<p>Pre-K-12 Guided Tours and Self-Guided Tours 64 Students 1,741</p>	<p>University Guided Tours and Self-Guided Tours 39 Students 691</p>
<p>Participating School Districts 12</p>	<p>Art in Your Classroom Program In-School Visits 31 Students 767</p>	



The Seattle Children's Theatre collaborates with the Frye Art Museum to present the monthly Small Frye: Storytelling in the Galleries program. Photo: Greg Plumis

ARTS ENGAGEMENT PROGRAMS Adults

<p>Adult Programs 462</p> <p>Participants 9,556</p>	<p>Lectures, Gallery Talks, and Tours 383</p> <p>Participants 6,305</p>	<p>Art Studio Classes 46</p> <p>Participants 756</p>	<p>Film Programs 19</p> <p>Participants 1,197</p>	<p>Music Programs 14</p> <p>Participants 1,298</p>
<p>Public Programs Offered for Credit/Clock Hours with Seattle Pacific University 79</p>	<p>Art History Lecture Series and Summer Art History Courses Connections and Context Lectures Gallery Talks & Exhibitions Lectures Literary Performance Public and Private Tours Tea and Tours</p>	<p>Saturday in the Studio Summer in the Studio</p>	<p>Community Cinema Critics Wrap Magic Lantern Talks & Film Screenings</p>	<p>Ladies Musical Club Seattle Classic Guitar Society Seattle Opera Preview Lectures</p>



A student at work in the Frye Art Studio.
Photo: Ryan Hyde

ARTS ENGAGEMENT PROGRAMS Educators



Educator Programs
35

Participants
620

Gallery Guide
Training Workshops
25

Participants
422

Professional
Development Programs
10

Participants
198

Educator Programs
Offered for
Credit/Clock Hours
with Seattle Pacific
University
9

- Parent Docent Workshops
- Visual Thinking Strategies Educator Workshop
- Creative Expressions in Dementia Workshops
- Museum Educators of Puget Sound Training
- University Child Development School Training

The 2012 studio class *From Sketching to Painting*.
Photo: Jill Hardy

ARTS ENGAGEMENT PROGRAMS Community Programs and Events

<p>Community Programs 170</p> <p>Participants 4,653</p>	<p>On-Campus Programs 137</p> <p>Participants 3,158</p>	<p>Off-Campus Programs 33</p> <p>Participants 1,495</p>
<p>Events 34</p> <p>Participants 3,649</p>	<p>Sea to See: Family and Educator Day</p> <p>First Hill Walking Tours</p> <p>here:now – Arts Engagement for Individuals Living with Dementia</p> <p>Mindfulness Meditation</p> <p>Path with Art Classes</p> <p>Self-Guided Tours Led by Community Groups</p> <p>Small Frye: Storytelling in the Galleries</p> <p>UW Museology Graduate Program</p>	<p>Mindfulness Meditation at Skyline</p> <p>Small Frye: Storytelling in the Galleries at Skyline</p> <p>here:now – Arts Engagement for Individuals Living with Dementia at Skyline</p> <p>Art History Lecture Series with Rebecca Albiani at Skyline</p> <p>Gallery Guide Training at Skyline</p> <p>Chaos and Order Lecture Series at Skyline</p> <p>Woodland Park Zoomazium Birthday Party</p> <p>Seattle Art Museum Family Festival</p>
<p>Facility Rentals 10 events / 685 participants</p> <p>Frye Events 24 / 2,964</p>		



The Poem Store at From Sea to See: Family and Educator Day, 2012. Frye Art Museum.
Photo: Sara Tro

ARTS ENGAGEMENT PROGRAMS Community Partners

Program Partners

Alzheimer's Association - Western and Central Washington Chapter
Arts Ed Washington
Community Cinema Seattle
Elderwise
First Hill Culture Group
Historic Seattle
Ladies Musical Club
Museum Educators of Puget Sound
Path with Art
Seattle Art Museum
Seattle Children's Theatre
Seattle Classic Guitar Society
Seattle Opera
Seattle Pacific University
Seattle Psychoanalytic Society and Institute

The Seattle Public Library
Seattle University
Simpson Center for the Humanities
Skyline at First Hill
Sorrento Hotel
Swedish Medical Center
University Child Development School
University of Washington Department of Germanics
University of Washington Museology Program
Visual Thinking Strategies
Washington Art Education Association
Woodland Park Zoo



Back to the Future—Art! summer camp presented by the Frye Art Museum in collaboration with Seattle Children's Theatre.
Photo: Jill Hardy

SUPPORT Foundations, Funding Agencies, Corporations, Media Sponsors, In-Kind Contributors, and Individual Donors

Total Contributions
\$135,656

October 1, 2011, to
September 30, 2012

Foundations

Canonicus Fund
Frye Foundation
Grousemont Foundation
Humanities Washington
Offield Family Foundation
PONCHO
Pruzan Foundation
The Seattle Foundation
The Sill Family Foundation
Gordon D. Sondland &
Katherine J. Durant Foundation

Funding Agencies

4Culture
4Culture Site Specific
ArtsFund
City of Seattle Office of Arts &
Cultural Affairs
Washington State Arts Commission

Corporations

Bill & Melinda Gates Foundation
Matching Gifts Program
The Boeing Company
Boeing Gift Matching Program
BNY Wealth Management
Employees Community Fund of the
Boeing Company
Microsoft Matching Gifts Program
Nitze-Stagen
Olson Kundig Architects
Riddell Williams P.S.
Starbucks Partner Giving Programs

Media Sponsors

KUOW 94.9FM
Seattle Met
The Stranger

In-Kind Contributors

Christopher Flowers
The City Catering Company
Greenroom Decor
Kimberly's Old World Rugs
Lilies and Lemondrops
Linens by Alice
Tierra Landscape

Individuals

\$1,000+

Douglas & Susan Adkins
Jacqueline Beckley & Leslie Herzog
David & Kristi Buck
William Carleton
Katharyn Alvord Gerlich
Jan Hendrickson
Kate Janeway & H.S. Wright III
Mihail S. Lari & Scott E. Murray
Elizabeth Leach
Jennifer Lee & Mike Calcagno
Kap Lee
Kelly & Diana Lindsay
Sarah Miller Meigs
Sally A. Nelson

Janice Niemi & Dennis Braddock
Gary Owen
Frank P. Stagen & Tina Bueche
Paul Sturm & Flora Ling
Sam D. Teitzel

\$500-\$999

Vicki & Gary Glant
Patrick Greiner
Elanor & Gary Hamilton
Lisa & William Holderman
Scott Lawrimore & Yoko Ott
Monique & Bob Lipman
Yoshimi Ott
Herb & Lucy Pruzan

\$100-\$499

Danielle Baker & Peter Myers
John & Jennifer Bauer
Carol Bell
John Blackman
D. David Brown
David S. Brown, Jr. & Christina M.
Rockrise
Andrew S. Dillman

Kate Godman & Jerry Collum
Rosa H. Colón & Rose Tatlow
Thomas Galantowicz
Karen Hall
Lenore Hanauer
Denise Jackins & Bill Dougall
Michael Kann

Susan Lane
Kelly Maddox
Eve McClure
Richard Padden
Thornton A. Perry
Vincent Phillips
Ben & Margit Rankin
Bruce A. Ritzen
Greg Simmons
Bill & Bobby Street
John & Barbara Sweeney
Kentaro Toyama
Angela Trout & Scott Hamilton
Laraine & Richard Volkman
Leora & Robert Wheeler
Nancy S. York

SUPPORT Sustained Support

Cumulative
Contributions from
2008 to 2012

**Charles and Emma Frye Circle
\$20,000+**

BNY Mellon
The City Catering Company*
Grousemont Foundation
If/Then*
Kate Janeway & H.S. Wright III
The Estate of Randolph Philip Koelsch
The Estate of Audrey Doreen Lapeyrouse
Nitze-Stagen
Frank P. Stagen & Tina Bueche
Offield Family Foundation

**Walsler and Ida Kay Greathouse Circle
\$5,000-\$19,999**

4Culture
Douglas & Susan Adkins
ArtsFund
The Boeing Company
David & Kristi Buck
Canonicus Fund
William Carleton
CORT Event Furnishings*
Employees Community Fund of the Boeing Company
Katharyn Alvord Gerlich
Jan Hendrickson
KUOW 94.9FM*
Jennifer Lee & Mike Calcagno
Microsoft Matching Gifts Program
Nobilo Wines*
Riddell Williams P.S.
City of Seattle Office of Arts & Cultural Affairs
Gordon Sondland & Kathrine J. Durant Foundation
Washington State Arts Commission
Wright Janeway Family Fund
Wyman Youth Trust

**Director's Circle
\$1,000-\$4,999**

Aveleda Wines
John & Jennifer Bauer
Jacqueline Beckley & Leslie Herzog
Shari & John Behnke
Boeing Gift Matching Program
The Estate of Daisy Bryant
Mike & Cathy Casteel
Jane M. & David R. Davis
David Farrar
Greenroom Decor*
Virginia Griffiths
Benson & Pamela Harer
Humanities Washington
Cris & Bruce Jaffe
KPLU*
Mihail S. Lari & Scott E. Murray
Christopher & Alida Latham
Elizabeth Leach
Kap Lee
Kelly & Diana Lindsay
Kibble & Prentice
Sarah Miller Meigs
Sally A. Nelson

Janice Niemi & Dennis Braddock
Kathleen O'Grady
Olson Kundig Architects
Gary Owen
The Estate of Elizabeth Parke
PONCHO
Pruzan Foundation
The Seattle Foundation
Paul Sturm & Flora Ling
Team Photogenic*
Sam D. Teitzel
Eve Van Rennes
Leora & Robert Wheeler

* In-Kind donations

SUPPORT Membership

Active Members
1,129

Art Circle Members \$1,000

Douglas & Susan Adkins
Shari & John Behnke
Midge Bowman
David & Kristi Buck
Jane M. & David R. Davis
David Farrar
Jan Hendrickson
Kate Janeway & H. S. Wright III
Frieda Sondland
Frank P. Stagen & Tina Bueche
Paul Sturm & Flora Ling
Kris & Mike Villiott
Maggie & Doug Walker

Patrons \$500

Nancy Alvord
Lee Burnside, MD
William Calvin & Katherine Graubard
Patricia & Theodore Collins
Sue S. Gilbert
Brian Gould
Linda Jangaard

Jon McClintock
Joshua Noble
Herb & Lucy Pruzan
Dorothy S. Stimpson

Contributors \$300

Martha Aldridge & Edith Aldridge
Jerry & Rita Anches
William L. Case III
Michael Doherty & Eric Akines
Lindsey & Carolyn Echelbarger
Cyrill Glockner
Kent Johnson & Cody Blomberg
David & Gail Karges
Christopher & Alida Latham
Albert J. & Suzanne N. Lecuyer
Christina & James Lockwood
Steven McKay & Kimberly Tepe
Andrew L. Nelson
Charles Roth
Jill Rullkoetter & William L. Hurley, Jr.
Greg Simmons
Sorrento Hotel
Petra Walker

Richard K. Worthington & D. Lisa West

Supporters \$150

Jack W. Aldrich
J. Martin Anderson & Lynn Gabriel
Lucius & Phoebe Andrew
Ted & Gretchen Andrews
Antique Appraisal & Estate Sale Service
Joan E. Arnold
Charlotte L. Behnke-Kuchin
Jane & Watson Blair
David S. Brown, Jr. & Christina M. Rockrise
Mike & Lee Brown
Marta Chaloupka
Ashley Clark & Chris Manojlovic
Gale & Jack Courtney
Raymond Cox & Jerold Olson
Svetlana Crabtree
Rion & Lauren Dudley
Susan & Lonnie Edelheit
Kay Edwards
Brenda M. L. Fong

Shirley Frank
Julie A. Fraser & Rachel Kudrna
Lloyd & Janet Frink
Patti & Mike Frost
Katharyn Alvord Gerlich
Lyn & Gerald Grinstein
Ann Harrang
Larry & Mary Ann Heeren
Sharalyn Heeringa
Marjorie K. Hemphill
Jeanne Johnson
Donna Kovalenko
Donna Latrell & Robert Kenin
Marguerite & Jerry P. Lewis
Robert Jamie and Randy Linden
Barbara Martyn & Robert Boundy
William Maschmeier & Patricia Haggerty
Lisa & David Mayfield
Carol McLaughlin & Leslie Fox
Julie O'Farrell
Terry & Judy O'Keefe
Dorothy J. Oberto & Lindsay Oberto
Thornton A. Perry
Elizabeth Rummage

Cathy A. Sarkowsky
Norie Sato & Ralph Berry
Thomas M. & Frances E. Scheidel
Henry & Helen Schwartz
Kate Kurtz & Jacob Sheppard
John & Maureen Short
Morton & Judith Tavel
Judy Tobin & Michael Baker
Ellen Vernon
Wallace Wilkins
Nancy S. York

Continued on page 22

Opposite:
View of the Frye Art Museum galleries
following refurbishment.
Photo: Stuart Westmoreland



SUPPORT Membership

Elizabeth L. Baker & Brian W. Taylor	Sally Benson	Whit Brachna	Chris Cantu	Mary Louise & Bruce Colwell	Anna Delacroix	Robert & Diane Eagon	Scott Fife & Susan Boyle	Margaret S. Girtch	Gary K. Gwin
Emily K. Baker	Donna Berg	Daniel W. Brady	Ellen B. & Albert S. Carlin	Mary Coney	Gerald Delay & Diana Ryesky	Billie C. Eaton	Lisa Finelli	Kristine Givan	Gary & Kathryn Habadank
V. Nadine Baker	Margarete Berg	Richard H. & Nancy Brainard	Linda Carlson-Brazil	Thelma S. Coney	Adele Delisi	Carol Ebersole	William Finger	Sara & Jay Glerum	Myrna L. Hackney
Mary E. Bakke	Laura Berkowitz	Charles & Jan Branham	Jean Carlson	Elizabeth Conner	Elli DeLong	Linda Eblen	Albert & Irene Fisher	Niki Golberg	Sue Haft
Warren Bakken & Lynn Phillips	Mary Ann Berrie	Lauren Bratney	Carole R. Carroll	Karen Contreras	Eleanor L. Dempsey	Malcolm L. Edwards & Elizabeth M. Dowd	Kelly Fitzhugh	Mary Jane Golden	A. F. Hagen
Barbara Baldwin	Amanda M. Berry & Troika Tuggle	Rene A. & Stephanie L. Bravmann	Emily N. Carter	Merrilee Conway	Frank & Anna Denton	Donald & Paula Eismann	Anne Focke	Sylvia Goldstein	Katalin & Stephen B. Haley
Robert Bamford	Herb & Karen Berry	Pansy G. Bray	Kate Casprowiak	Kelsey Cook	Susan Dernbach	Patricia Ellingham	Mikaron Fortier	Joan Golston	Catherine E. Hall
Melanie Banel	Bob & Berta Beveridge	John Breitweiser & Stuart Wilber	Megan Castillo	Elizabeth Cooperman	Courtney DeRouen	Julie S. Elliott	Joanne Foster	Joan Goodwin	Joyce Halldorson
Mary Beth Banks	Karen Bianchi	Penni-anne Bricker	Cheryl Cebula	Amy & Lawrence Corey	Margaret Dibb	Kaley Ellis	Marietta Stark Foubert	Suzanne Goren & Vahe Hovnanian	Marsha & Edward Hallett
Susan Bannon	Reba S. Bigelow	Barbara Chandler	Marjorie B. Chadsey	Edward Corker & Carol Schneider	Marilyn E. Dickey	Ann Emerson	Mary Jane Francis	Newell & Kaye Gough	Brenda Hallquist
Karl Banse	Julianne Biggs	Shawn Brinsfield	Barbara Chandler	Richard Cormier	Mary Dickinson	Ron Endlich	Beulah Frankel	Barbara Gourley	Diane Ham
David W. Barker	Marcia R. Binney	Arden Charles	Ronald Chase	Robert & Beverly Corwin	Barbara J. Dickson	Jeannie Engle	Lanie Franza	Molly D. Graham	Amy Hamblin
Murl Barker & Ronald Miller	Sarah & Alan Black	Ronald Chase	Grace Chen	Mayra Cota	Eleanor B. Dickson	Katherine C. English	Alene Freidenrich	Pearl Graham	Gregory Hammrich
Veronica Barnes	John Blackman	Lawrence Chen	NeelyBat Chestnut	Louise Cothary	Sheila C. Dietrich & Miceal F. Vaughan	Robert English	Janice M. French	Gloria Grandaw	Walt Handschin
Pauline A. Barrette	Jean Blagg	Yoon-Whan Choe	Jeffrey Cowan & Jan Olson	Jeffrey Cowan & Jan Olson	Andrew S. Dillman	Laura Enstrom	Marla French	Richard Grann	Jan Hangland
Leanne Bassetti & William Berleman	Deborah Blake	Gale Chrisman	C. Joan Cox	Larry & Katherine Crandall	Alanna Dillon	Agnes T. Erickson	Daniel & Lynnda Fretwell	Darlin Gray	David J. Haracz
Paul B. Bauck & Jean H. Sullivan	Jean Blake	Laura Chrisman	Larry & Katherine Crandall	Ronald & Beverly Christensen	Anne Dittmar	Dorothy Erickson	Barbara Friedl	Miriam Gray	Benson & Pamela Harer
David & Christine Bauer	Robert W. & Mary Sanford Blake	Ronald & Beverly Christensen	Jennifer Dixon	Chris Christiansen	Kendall Dittmar	Sarah Erickson	Irma Fritz & Daniel Hanson	Charles & Jill Green	Eugene Green
John & Jennifer Bauer	Nancy Blakemore	Chris Christiansen	Dorothy Crandell	Jessica Cima	Roscius Doan & Ginger Warfield	Jody Ericson Dorow	Harlene L. Frohnen	Eugene Green	Elise Harper
Barbara Baugh	Pat & Larry Bliquez	Shirley Crawford	Roy D. Doerfler	Caryl Clark	Raymond F. & Cindy Crerand	Joanne Euster	Susan C. & Albert Fuchs	Robin Green	Caron Harrang
Shelley & Alan Baumgarten	Robert Boatsman	Chris Crawford	Sharon L. Doman	Heinke Clark	MaryAnn Curran	John & Gloria Evans	Ali Fujino	Nick Gregoric	Alfred Harris
Sara J. Bayer	Sue Boettcher	Dorothy Crandell	Marjorie L. Domenowske	Lisa Clark	Jacqueline Cutting	Rebecca Evans	Herbert & Barbara Gamber	Patricia Gribble	Wanda A. Harris
Ruthanna Bayless	Bill Bohnenberger	Shirley Crawford	Marjorie L. Domenowske	Phyllis B. Clark	Barbara Dahl	Robert C. & Mary P. Faine	Pedro & Wanda Garcia-Pelayo	Ann & David Griffin	Aron Hart
Harry Beasley	Rebecca Bolin	Raymond F. & Cindy Crerand	Sue Donaldson	Barbara Bush	Lou & Mark Damborg	Brian Fairbanks	Carol & William Garing	Fay Griffin	Joan Harvey
Faith Ann Beatty	Terrence Bone	Molly Donohue	Kathleen Donnellan	Richard Busselle	Barbara & Ted Daniels	Jean Farkas	Bucky Farquhar	Laurie Griffith	Patrick Haskett
James D. & Christie A. Beback	Frederick P. & Karen J. Bonk	Carolyne & Pierre Dorratcague	Molly Donohue	John Butler	Bessie Danilchik	Bucky Farquhar	Ruth Fast	Mary Ellen Grimes	Janet Hasselblad & Douglas Beasley
Kim Bedier	David L. Bonsteel	Marcia Douglas	Carolyne & Pierre Dorratcague	Carol Byron	Mary E. Dart	Ruth Fast	James & Gretchen Faulstich	Myrtle V. Groom	Dick Hawes
Chris Bee	Ellen Borison	Patricia Dowd	Marcia Douglas	James & Elizabeth Caesar	Christine S. Davis	James & Gretchen Faulstich	Beverly J. Feeney	Jerome & Margaret Grubaugh	Dorothy & Patrick Hawkins
Harold Beebe	Elisabeth T. Bottler	Hartrice Drangsholt	Patricia Dowd	Ruth M. & Mike Bovarnick	Lois M. Davis	Beverly J. Feeney	Richard Feinbloom	David & Marilyn Gruhn	Patricia Hayden
James Beer	Ruth M. & Mike Bovarnick	Cornelia Dude	Hartrice Drangsholt	Joan Bowers	Karan Dawson	Richard Feinbloom	Ashley Fejeran	Esperanza Grundy	Anne Hedley
Jennifer Beetem	Jan & Gary Box	Vadim Dumin	Cornelia Dude	Tracy Boyd	Donald & Linda Cohan	Ashley Fejeran	Mary Felsing	Linda Gruss	Esther Helfgott
Carol H. Bell	Janine Boyer	Ruth S. Dunlop	Vadim Dumin	Jack Campbell	Kathleen Coleman	Mary Felsing	Pete Ferren	Kathleen Guest	Kate W. Hemer
M. Bender	Leslie Boyer	J. Richard & Carlyne Durnan	Carmen Ficarra	John H. Campbell II & Lynda D. Bryan	Alexandra & Jere Colman	Carmen Ficarra	Shirley & Del Gerstenberger	Helen Georges	Steve Guinn
Teresa & Chris Bennion	Eloise M. Boyle	Alison & Alyn Duxbury	Marilyn & Michael deGuzman	Kate & Jerry Campbell	Rosa H. Colón & Rose Tatlow	Henry & Francine Fielding	Marilyn Gilbert	Barbara Gulbran	Barbara Gulbran
	Len Braarud			Katherine Campbell			Karin Gilmore	Dorothy Guth	Dorothy Guth
				Dorothy L. Canavan			David R. & Susan H. Gilmour	Janet & Don Guthrie	Janet & Don Guthrie
								David & Alice Gutsche	David & Alice Gutsche

SUPPORT Membership

Cynthia Hibbard	Ellen Huggett	Mary Junttila	Joan Kohl	Jean Leblon	Ann G. MacMillen	Raymond Maxwell	Ann G. Mac Millen	Mirna Mujacic	Beverly Osband & Eberhard Riedel
Michael Linde & Fleur Hickey	Rich & Mary Jane Hungate	Marta & Sven Kalve	Judith Kolokoff	DeAnna Lee	Carla Madrigal	Annette Mazikowski	Cristy Miller	Elizabeth Muktarian	Amanda Overly
Kathryn Higgins	Sooyoung Hwang	Lisa Kane	Thomas Koontz	Diana Lee & Dale Jarvis	David W. Madsen	Ken & Cindy McBride	Gregory Miller	Pamela A. Mullens	Eugene Owen
Stephanie Hilbert	Mabelle B. Hyink	Susan Kane	Kenneth Kopan	Jalaine Madura	Patrick & Betty Maher	Marguerite McCarty	Dr. Jocelyn & Michael P. Miller	Barbara Muller	Gary Owen
Ken & Judy Hill	Lynne Iglitzin & Walter Bodle	Nancy & Karl Kaseburg	Christine Kopet	John Lee	Patrick & Betty Maher	Sharon McClellan	Judith A. & William P. Miller	James & Shirley Munro	Meg Owen
Michael R. & Judith A. Hill	Faith Ireland	Mindi Katzman	Mary Lou Kostal	Yoona Lee	Irene Mahler	Ralph McCloud & Eleanor Weston	Marilyn Miller	John Munson	Elaine S. Packard
Carolann Hiller	Eve Alyson Ishizuka	Tamara Keefe	Jan Krassner	Jon & Rosemary Lehman	Alison Maki	Ruth H. McCormick	Sandy C. Bricel Miller	Colleen Murphy	Erin Page
Barbara D. Himmelman	Katherine Iverson	Beryl Keller	Sandy & Daniel Kraus	William F. & Joanne Lemke	Richard Mamolen & Megumi Kobayashi	Carole McCutcheon	Lynn Murray	Helen Palisin	Ronald Palmatier
Marian E. Hoare	Luanna Iverson	Hiroko Keller	Antje & Peter Kretschmer	J. Leo	James J. Maras	Brent McFarlane	Suzanne E. Miller	Toni Myers	Marietta Pane
Guerry Hoddersen & Heidi Durham	Robert & Voicelyn Jackson	Peggy A. Kelley	Elfriede H. Kristwald	Anne-Marie Leon	David Margolies	Patricia McGovern	Peter Millett & Sherry Markovitz	Andrew Nachtigal	Allan Panitch & Jane Commet
Geraldine Hoefler	Lois Jacobsen	Duane Kelly	Sofia Leung	Sofia Leung	Roberta Margolis & Sheldon Renan	Fiona McGuigan	Howard & Jean Mills	Mary & Chuck Nau	Rose Paquet-Kinsley
H. Clark Hoffman MD	Anne & Paul Jacobson	Linda M. Kelly	Rita Krueger	Irv & Mary Levin	Emily Bregger Marks	Susan McInnis	Judith E. & John P. Mills	Lorene Neff	Neely & Geraldine Pardee
Marshall Hoffman & Sandra Hoffman	Neal & Gwen Jacques	James E. Kemp-Slaughter	William & Kathryn Kuhns	Phillip & Rachael Levine	Joseph & Joyce Marleau	Ann & Robert McIntyre	Myron & Elvira Miner	Roberta Nelson & Scott Thompson	Virginia Park
Anne E. Hoffmann	Iris S. Jaffee	Brooke Kempner	Hy Kurfirst	Audrey Lew & John Tilden	Dianne & David Marquardt	Mary McIsaac	Garland Minor	Ronald J. & L. Ruth Nelson	Kristan Parks
Frank Hofmeister	Cinda Janik	John Kendall Wilson	Christine Kurjan	Janet Lewinsohn	Bonnie Marques	Emma McKee	Abby Mitchell	Sally A. Nelson	Jean Pasche-Lambert & Gordon Lambert
James & Susan Hogan	Dawn C. Jarvis	Dr. Kathryn Kennedy	Allan M. Kutoff	Mary Lou Lewis	Joan C. Marsh	Mysti McKeenan	Cecily & Terence Mitchell	Erin Nettles	Kathy Paul
Sue Holland	Rebecca Jaynes	Maro Kentros	Frances J. Kwapil	Pat Lewis	Iris R. Marshall	Donald S. McKenzie & Elizabeth Anne Buzzell, ASA, FRSA	Elizabeth R. Mitchell	Hilary Newberry	John S. Payne
Robert L. Hollowell	Hugh & Beverly Jennings	Janet & Grattan Kerans	Deirdre Lacambra	Ingred Lahti Lahti Eisenman	Darlene Martin	Meegan McKiernan	Ian Mitchell	Lawrence H. Niece	Dennis Peacock
Roy Holmlund	Jenny Kim	Joan Kiefner	Jan Lainoff	Kelly Lillis	Robert & Pattie Martin	Patricia McLean	R. Howard Mitchell & Barbara O'Steen	Jerri Ninesling	Esta Pekow
Donald M. Holz & Carol M. Webb	Jerra Jenny	Deanna Killeen	Lady Margrit Lindal	Inez Lindsey	Shannon Martin	Kathleen McLoughlin	Bonnie Mizock	Nancy A. Noble	Katie Pennella
Douglas & Trish Honig	Joyce Jensen	Jack Kindred	Richard Laird & Kathryn Louis	Cynthia Linet	Tessa Martin	J. Richard McMichael	Sara Mockett	Carrie Noess	Joseph Pentheroudakis
Helaine Honig	Paule R. Jensen & Neils Peter Jensen	Judith M. King & Gifford Thomas	Najma Lalji	Clare Livingston	Marjorie Masel & Chris Chantrill	Diane McPhee & Arthur Joyner	Patricia Moe	Jan North	Tiffany Norton
Laura Horan	Peter Jerden	Marlene Kingman	Ellen Lam	Margie Livingston	Claudia Mason	Joyce McQuaid	Betty Moll	Kaela Nurmi	Marianne Perkins
Kimberly W. Horne	Albert Johnson	Richard & Richelle Kirchoff	Kristie Langlow & Robert B. Kohn	Gail W. Livingstone	Johanna Mastenbrook	Barbara & Jim McQueen	Jo Moniz	Jeanette O'Connor	Beverly H. Perry
Esther Horowitz	Dale R. Johnson	Nicole Klein	Sharon S. Langs	Miriam Lowin	Helen J. Matekel	Mary Meikle	Richard G. & M. Lorinda Monson	Marnie O'Sullivan	Marie Peters
Cecilia F. Horton	Susan M. Johnston & Jerry L. Hollingsworth	W. M. Kleinenbroich & Robert Sparks	Jim & Elhri Larsen	Betty Lucas & Gordon Jackins	Ida M. & Ralph N. Mathews	Lora Melhorn	Jared Moore	Georgia Oistad	Florence Peterschmidt & Eve McClure
Janet A. Horton	Vincent M. Jolivet	Mary Kleiner	Gretchen Lauber	Anne Ludlum	James C. Mathews	Elvie Mendoza-David	Phoebe Ann & Malcolm Moore	Mitsuko Okada	Millard & Ruth Petersky
Mary Horton	Betty Jones	Christine Kline	Joy Lauderbaugh	Annette Luke	Larry & Karen Matsuda	Nives Mestrovic	Ellen Moos	Shari Okada	Bonnie Peterson
Megan Hosch-Schmitt	Frank Jones & LinMara Bluebird	Joan Klorer & Barbara DeAsis	Mary Law	Intis Luters	Barbara & David Matthes	Mary Metastasio	Wendy Ann Morgan	Erin A. Oliver	Christine Olsen Reis
Ramy N. Hough	Lynnette Jordan	Patricia A. & Edward Kloth	Tara & Peter J. B. Lawrence	L. Kelly Lyles	Sheila Lyon & Darrell Beckmann	Devera Metter	Gabby Moritz	Christine Olsen Reis	Daniel E. and Sharon Peterson
Teri Houston	Nancy Jordan	Emelie Knappett	Ruth O. & Robert T. Lawson	Sheila Lyon & Darrell Beckmann	Linda MacClellan	Devera Mettera	Nancy Morningstar	Gladys R. Olson	Jan Peterson
Suzanne N. Howard	Terry & Pam Jorgensen	Christine Knorr	Candice Lazarus	Hailey MacKay	Jennifer Matthews	Peggy & Red Meyer	Susan R. Moseley	Mildred & Gerald J. Oppenheimer	Jeanne Peterson
Jeraldine L. Huber	Margaret H. Joy	Nancy Knox	Ken Leader	Sally Mackle	Shelley Maughan	Ana Mikel	Alice E. Moss	Ann Ormsby	Judy Peterson
Philip Huebschen	Nan Joy	Nancy Knudsen	Shirley E. Leary	Sandra MacLean	Rebecca Maxim	Donna & Rimvydas Miksys	Sandra J. Moss	Max Ortiz	Lisa Peterson
							Marcia M. Mueller	Justin Orvold	Tyler Petri

SUPPORT Membership

M. Denise Petty	Mark & Frances Reader	Edith Rosencrantz	Cynthia L. Schell	Mauri Shuler	Nicole Soulia	Helen M. Szablya	Claude L. Utley	Constance Wentzel	Deborah Wothers
Marjan & Ronald Petty	Maria Reid	Judy Rosenfeld	Mark Scherschel II	Leonard & Ginny Shulman	Michael Spafford & Elizabeth Sandvig	Mizuyo & Asaomi Takamori	Suzanne Vadman	Kathie Werner	James M. & Lucille Hull Wright
Hilde Pfurttscheller	Wendy Reilly	Patricia Rosenstrom	John & Lois Schick	Zoa & Bill Shumway	Kally Spencer	Judy Talley	Manijeh F. Vail	Elizabeth Wery	Charlotte Yeary
Shannon Phelps	Steve Reip	Josie & Sam Roskin	Donna Emsel Schill	Peter Sill & Marcia Joslyn Sill	Jim & Sonja Staley	Mary Ellen Talley	Rodrigo Valenzuela	Leora & Robert Wheeler	Elizabeth H. Young
Ingrid Z. Philbrick	Michael J. Repass	Alfred & Geraldine Ross	Jeffrey Schiller	Robert Silvola	R.J. Lupinski Staley	Jennie Tarabulus	Frits W. van Oppen	William Whipple	Shoko Zama
Lisa Picard	Barbara Retzlaff	Susan Ross	Gloria Schlueter	Amelia Simon	Helen Stanwell	Peter & Ellen Tarnawa	Don & Leota Van Wieringen	Danny V. & Joanne White	Carolina Zamorano
Jane Piehl	William A. & Virginia G. Revere	Penny Rosse	Andrew Schmid	Larissa Simone	Jim & Irma Stapleton	Hillary Taylor	Laura & Alan Veigel	Holly White	Sharon Zerr-Peltner
Ed Pierson	Sam Arland Rice	Gail Rossi	John Schmitz	Fred F. Simons	Ruth Stark	Layla Taylor	Ethel R. Vesper	Kathryn White	Corinne Zibelli
Fred & Mary Pilkington	Carolyn Richard	Steven W. Rostad	Larry Schmitz	Richard Sindell	Marilyn Stauter	Shari & Robert Teeple	Jan Villard	Marie H. Whitesel	Ellen Ziegler
Robert Pillitteri	N. Kay Richards	Jean Rowlands-Tarbox	Donald & Anne Schmutz	Ed & Joan Singler	Diane Ste Marie	Sam D. Teitzel	Marisa Vitiello	Stephen & Mary Whitmore	Helen Zimmerman
Donald Pogoloff	Kim Richter	Marjorie Rubin	Hans Schneeberger	Ruth A. Sinton	Crystal Stein	Jack Temple	Marion Vokey	Ted W. Wiedman	Mary Louise & Victor A. Ziuzin
Alice Poinier	Devon Vose Rickabaugh	Marie Ruby	Katherine Schneider	Mary Siple	Luba Stenchever	Ann Teplick	Chris Volk	Nancy & Paul Wiesner	Johanna Zubko
Judy G. Poll	Margaret A. Ridgeway	JoAnne Rudo	Constance Schnell	Beverly Skelly	Evelyn Sterne	Angela Terry	Susan Vuylsteke	Brian Wade	Jennifer Zwick & Dan Dean
Christopher Porter	Doris V. Riepe	Amy & Frank Ruggiero	Rosalind & Bob Schuessler	June M. Skidmore	Esther L. Stevenson	John & Karen Thielke	Jessica Wagoner	Richard C. & Inta M. Wiest	
Marcia Porus	Tom Riley	Patricia Runyan	Dorothy Schumacher	Linnea Skoglund & Barabara Strindberg	Linda Steverman	Marilyn & Brad Thomas	Judy Wald	Donnelly J. Wilburn	
Marion Power	Bruce A. Ritzen	Karen Russell & Michael Broilli	Lorraine Sliger	Lida Sloan	Olga Stewart	Marilyn J. Thompson	Lenore Waldron	Toshiko Wilgerodt	
Tracy Pozil	Joyce Rivkin	Rev. Michael G. Ryan	Madge Hall Schumacher	David & Charmaine Slotnick	Nancy Stokley	Michael Thompson	Diane Walker	Helen Williams-Ginsberg	
Charlton Price	Judith Roan & Ron Reeder	Deenalynn Sackman	Christopher Schwalm	Allan Smith	Philip & Susan Stoller	Jerry & Earnale Thonn	Patti Warashina	Beverly J. Williams	
Janet Price & Don Theiler	Kathleen Roan	Pat Saito	Stephanie Scripps	Charles & Joy Smith	E. Jay Stopper & Cathy Ackert	R. Thorne & Rudy Bishop	Jenifer Ward	Christopher Williams	
Joyce Prigot	Stephen Robbins	Maryalice Salget	Sharon Scully	Clayton J. Smith	George Strain	Lisa Thornhill-Richman	Shirley A. Ward	Jan Williams	
Rob Prufer	Janet C. Robertson	Hannah Salia	Martius D. Seeger	Jeanne M. Smith	David Strand	Mary Todd	Susan Ward	Karin A. Williams	
Barbara Quinn & Mario De Pinto	Judy Robertson	Ann Salmon	Susan Segalla	Joy P. Smith	Lydia G. Stratton	Eleanor Toews	Nathalie Wargo	Lael Williams	<i>All listings reflect donations made and memberships beginning on or before September 30, 2012.</i>
Barbara & Philip Quinn	Pamela D. Robinson	Samaneh Saman	Karen Sehrer	Olga V. Smith	Mares Strehler	Lorraine Toly	Schuyler & Anita Warmflash	Roger & Connie Williams	
Susan Radant	Connie D. Rodriguez	Lucille Sambrook	Beth Sellars	R. Peggy Smith	Linda Struthers	Judy & John Toone	Andy Warren	Roger Willisie	<i>Every effort has been made to ensure accuracy. Please phone 206 432 8227 with omissions or errors.</i>
Jacqueline Rafferty	Renato Rodriguez	Svetlana Samochina	Paul Shaker	Sandra Zu Smith	Robert Stumberger	Lory Tossey	Richard Warren	Elida Wilson	
Gerald & Marla Raine	Patricia Rogers	Judith Sanderman	Ellen Shaman	Sara F. Smith	Carol M. Stumpf	David & Chris Towne	E.C. Wartelle	Gene & Nancy Wilson	
Joseph M. Rait	Kristine A. Rogness	Lael Sanders	Donn & Carole Shankland	Milton & Sherry Smrstik	Paula Suarez	Jack Trachtman	John Watt	Joan Weber	
Lewis & Shelia Ralston	Angelika M. & Daniel C. Rooney	Karolyn Jo Sanderson	Kenneth Sharaga	Kascha Snavely	Rosemary Sudmeier	Brittany Traub	Joan Weber	Birgit Weeks	
Teresa Ramon	Maridy Roper	Eldine Sanger	M. Darrel & Barbara A. Sharrard	Pat Soden & Marilyn Trueblood	Susan Sullivan	Margee Sursely	Laura Weese	Lynne Wilson & Bruce Goldmann	
Mary R. Randall	Phyllis Rosalli & Lucy Jane Rosalli	Sharon Sasseen	Keith R. Shaw	Sally Soest	Margee Sursely	Susan Danielson	Jules Weisfeld & Rebecca Woods	Lowell & Renate Wines	
Emilie Rankin	Elizabeth Rose	Lyn F. & Hans J. Sauter	Barbara R. Sheldon	Shirene Soleiman	Susan Danielson	Karen Sutherland	Katherine Weissbourd	Esther B. Wolf	
Al & Carolyn Rasch	April Roseman	Borje O. Saxberg	Gilda L. Sheppard, Ph.D	Robert & Barbara Solomon	Pamela K. Svore	Frank & Jennifer Swant	Robert Welden	Donna Wolter	
Al Rasmussen	Elizabeth Rosen	Matt & Sheri Sayre	Lolly Shera	Stephen Somerville	Frank & Jennifer Swant	Melanie A. Twohy	Lissa Wells	Valerie Wonder	
Beatrice Rauch	Karin Rosenberg	Art Schaffer	Gary & Merridy Shinn	Carla Sonheim	Peggy Swayne	Kay & Frank Tyllia	Sabella Wells	Francis C. & Thelma K. Wood	
Virginia R. Rausch	Stanley M. Rosenberg	Sonya Scharf	Ruth E. Shipp-Dart	Leroy & Joie Soper	Robert S. & Elizabeth G. Swenson	Hunter Tynes	Chuck & Jan Welsh	Marijean Woodward	
						Jeannette L. Unger	Peggy Worthman		

SUPPORT Volunteers

Volunteers

Volunteers spend thousands of hours at the Frye Art Museum every year, providing important and valued support for a wide range of initiatives including welcoming visitors, giving guided tours, working in the Museum Store, assisting with Arts Engagement Programs, and serving as interns in the Collection, Curatorial, Archive, Communications, Education, and Special Events departments.

We thank all of our volunteers for their generosity in contributing their time and presence to enable the Frye Art Museum to better serve our community.

If you would like to volunteer, please contact us at volunteer@fryemuseum.org or 206 432 8269.

Listings reflect volunteer participation from October 1, 2011 to September 30, 2012.

Every effort has been made to ensure the accuracy of these listings. Please phone 206 432 8227 with omissions or errors.

Ben Abraham
Jerry Ainsworth
Lexie Aleshire
Pat Anderson
Rebecca Bolin
Lauren Bratney
Janet Brookes
Rick Busselle
Paula Calvin
Katherine Campbell
Chris Cantu
Megan Castillo
Erin Clavadetscher
Mary Ann Clymer
Kesley Cook
Elizabeth Cooperman
Alanna Dillon
Elizabeth Eknes
Mackenzie Engel
Sarah Erickson
Ashley Fejeran
Barbara Friedl
Kathryn Higgins
Annie Hoffman
Laura Horan
Esther Horowitz
Philip Huebschen

Lynne Iglitzin
Jerra Jenny
Nancy Knox
Sandy Kraus
Susan Lane
Barbara Ledger
Sofia Leung
Cynthia Linet
Hailey Mackay
Alison Maki
Bonnie Marques
Claudia Mason
Annette Mazikowski
Emma McKee
Kathleen McLoughlin
Brittany McManus
Barbara McQueen
Lora Melhorn
Abby Mitchell
Gabby Moritz
Mirna Mujacic
Tiffany Norton
Kaela Nurmi
Max Ortiz
Katie Pennella
Shannon Phelps
Marion Power

Jessie Quan
Renato Rodriquez
Susan Ross
Deenalynn Sackman
Sarah Schweitzer-Green
Kascha Snavely
Stephen Somerville
Nicole Soulia
Ruth Stark
Crystal Stein
David Strand
Layla Taylor
Brittany Traub
Marion Vokey
Sarah Ward
Jo-Anne Wilson

Interns

Jinnae Bezemer
Colleen Clement
Molly Donohue
Nikki Goldberg
Nicole Hocevar
Maura McCreight
Nives Mestrovic

Opposite: Gabriel von Max. *Botaniker* (The Botanists) (detail), after 1900. Oil on canvas. 25 x 31 3/4 in. Frye Art Museum, Charles and Emma Frye Collection, 1952.117.
Photo: Eduardo Calderón



STAFF

Museum Staff

October 1, 2011, to
September 30, 2012

Collections and Exhibitions

Robin Held
*Deputy Director, Exhibitions and
Collections*

Jess Atkinson
Collections Assistant

Mark Eddington
Exhibition Preparator

Eliot Fearey
*Coordinator, Exhibitions and
Publications*

Cory Gooch
Collections Manager / Registrar

Laura Landau
*Manager, Exhibitions and
Publications*

Elizabeth Mauro
Preparator

Shane Montgomery
Exhibition Designer

Lauren Palmor
Curatorial Intern

Communications

Jeffrey Hirsch
Deputy Director, Communications

T.J. Johnson
*Coordinator, Media and
Communications*

Beth Koutsky
Graphic Designer

Charla Reid
Graphic Designer

Chelsea Werner-Jatzke
Communications Associate

Development

Kate Godman
Deputy Director, Development

Eleanor Hamilton
Interim Deputy Director, Development

Paul Adolphsen
Development Assistant

Noah Barnes
*Coordinator, Web and
Communications*

Jinnae Bezemer
*Coordinator, Volunteers and
Community Partners*

Margaret Carter
*Manager, Special Events and
Facilities Marketing*

Molly Donohue
*Development Assistant and
Interim Assistant to the Office
of the Director*

Mallory Gitt
*Manager, Membership and
Community Partners*

Mariely Lemagne
*Manager, Membership and
Community Partners*

Director's Office

Jo-Anne Birnie Danzker
Director

Roxanne Hadfield
Assistant to the Director

Alexander Lawhorn
*Assistant to the Office of the Director
and Interim Exhibitions Manager and
Project Coordinator*

Education

Jill Rulkoetter
Senior Deputy Director

Carly Dykes
Education Assistant

Jill Hardy
*Coordinator, Youth, Student, and
Teacher Programs*

Mary Jane Knecht
Manager, Adult Programs

Coral Nafziger
Art Educator

Laura O'Quin
Project Educator

Deborah Sepulveda
Art Educator

Danica Stamenic
Education Assistant

Sarah Ward
Art Educator

STAFF

Finance and Facilities

David S. Brown, Jr.
*Deputy Director, Finance
and Facilities*

Jim Brinkman
*Manager, Accounting
and Benefits*

Trevor J. Johnson
Facilities Assistant

Jason Young
Manager, Facilities and IT

Gallery Café

Tiffany Turpin
Manager, Gallery Café

Gabriel Hillhouse
Prep Cook

Jason Huntley
Cashier / Barista

Melanie Robinson
Prep Cook

Brendan Ryan
Lead Cook

Museum Store

Laura Downing
Sales Associate

Rachael Lang
Assistant Manager

Vanessa Lang
Sales Associate

Whitney Nakamura
Sales Associate

Security Services

Ryan Molenkamp
Manager, Security Services

Heather Ratcliff
*Manager, Security Services /
Accounting Support*

Krista Bargsten
Security Services Officer

Clayton Cusak
Security Services Supervisor

Al Deanda
Security Services Officer

Trevor Doak
Security Services Officer

Jaymi Duarte
Security Services Supervisor

Amber Duginske-Rohl
Security Services Officer

Ben Gowing
Security Services Officer

Laura Hoppenjans
Security Services Officer

Jonathan Horn
Security Services Officer

Thomas Krueger
Security Services Officer

Kristy Lindgren
Security Services Officer

Emmett Montgomery
Security Services Officer

Amanda Parker
Security Services Officer

Greg Plumis
Security Services Officer

Mark Rogers
Security Services Supervisor

Stephen Sewell
Security Services Officer

Kelly Sheridan
Security Services Officer

Benjamin Thomas-Kennedy
Security Services Officer

Katy Thysell
Security Services Officer

Cait Willis
Security Services Supervisor

Financial Information

Audited financial statements for the Charles & Emma Frye Free Public Art Museum may be obtained online from the Internal Revenue Service by requesting a copy of Form 990 PF-Return of Private Foundation.

